

# Exercise 1: Getting Started with ODM

Jeffery S. Horsburgh<sup>1</sup>  
4-25-2012

## Objectives

In this exercise you will learn how to attach a blank ODM database to an instance of Microsoft SQL Server so you can load data.

## Prerequisites

The computer that you will be using in today's exercise was set up ahead of time for the workshop. It has all of the software that you need to complete the exercises.

To complete this exercise on your own computer, you must be running an instance of Microsoft SQL Server and have Microsoft SQL Server Management Studio installed. You can use any version of Microsoft SQL Server (i.e., Express, Standard, or Enterprise). If you do not have a license for Microsoft SQL Server, you can download and install Microsoft SQL Server Express from Microsoft for free. It is recommended that you download and install both SQL Server Express and SQL Server Management Studio Express. You can get both of these products in a single installation as well as installation instructions at the following Microsoft URL:

<http://www.microsoft.com/sqlserver/en/us/editions/express.aspx>.

When you install SQL Server Express, you need to enable mixed mode authentication (both SQL Server authentication and Windows authentication). This will allow you to work with the ODM Tools, ODM Data Loader, and ODM Streaming Data Loader applications that have been developed for ODM. These applications rely on SQL Server authentication to connect to ODM databases, and SQL Server authentication is only enabled when you choose the mixed mode authentication during installation. When you enable mixed mode authentication during installation, you will be prompted to create a password for the "sa" logon. The "sa" logon is the administrative account and allows you to manage all other logins. Choose a password that you will remember as you will use this account frequently.

## Attaching the Blank ODM Schema Databases to SQL Server

ODM is distributed as a blank SQL Server database that you can attach to your instance of Microsoft SQL Server. The following steps will show you how to do this. These steps were written using SQL Server Management Studio 2008; however, the steps are similar regardless of which version of the Microsoft SQL Server Management Studio you are using.

1. Double click on the "workshopMaterials" folder on the desktop of the training machine. Within this folder, double click on the "Wednesday" folder and then open the folder called "Horsburgh Data Files." In the "Horsburgh Data Files" folder, locate the zip file containing the ODM SQL Server Blank Schema Database. It is called "ODMBlankSQLServerSchema\_1.1.1.zip."

---

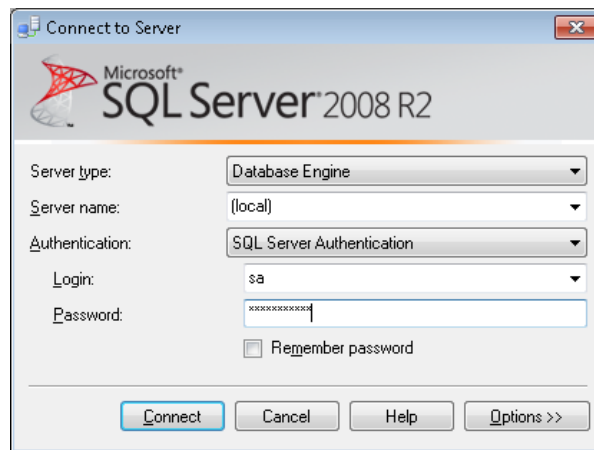
<sup>1</sup> Utah Water Research Laboratory, Utah State University, Logan, UT 84322-8200, jeff.horsburgh@usu.edu

2. Extract the blank schema database and its log file from the zip file to a location on your hard drive. It is suggested that you extract your database to the default SQL Server data folder, which is located at the following location on disk: C:\Program Files\Microsoft SQL Server\MSSQL10\_50.MSSQLSERVER\MSSQL\DATA. (click “Continue” if you are told you don’t have access to this folder).
3. Open Microsoft SQL Server Management Studio from the Start Menu by clicking on Start → All Programs → Microsoft SQL Server 2008 R2 → SQL Server Management Studio. The following window will appear.

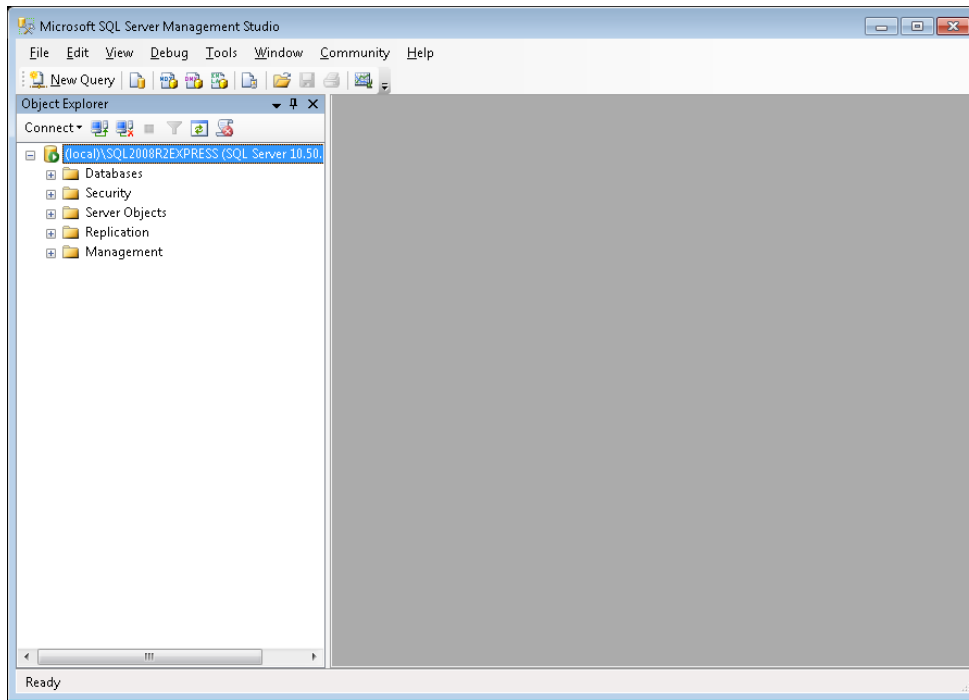


**NOTE:** If you are doing this exercise on your own machine the path to your SQL Server Management Studio shortcut in the Start menu may be different depending on which version of SQL Server you have installed and where you chose to put the shortcut in the Start Menu.

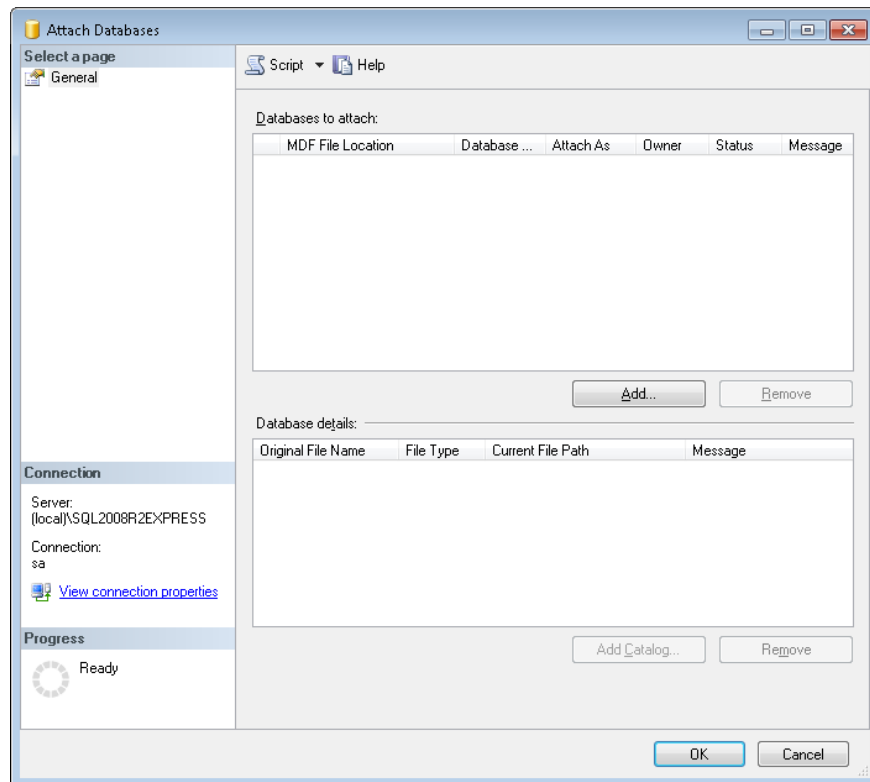
4. For this exercise, you will connect to the instance of SQL Server Express on the training machine. On the “Connect to Server” form, change the “Server name” to “(local)” Change the Authentication dropdown to “SQL Server Authentication,” enter “sa” for your login, and then enter “Password123” in the “Password” text box. Your window will now look like the following:



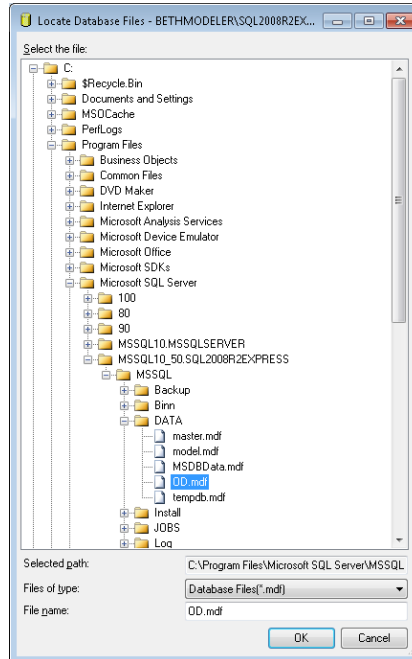
5. Click on the “Connect” button. This will connect SQL Server Management Studio to your local SQL Server instance. Your Management Studio window should look similar to the following.



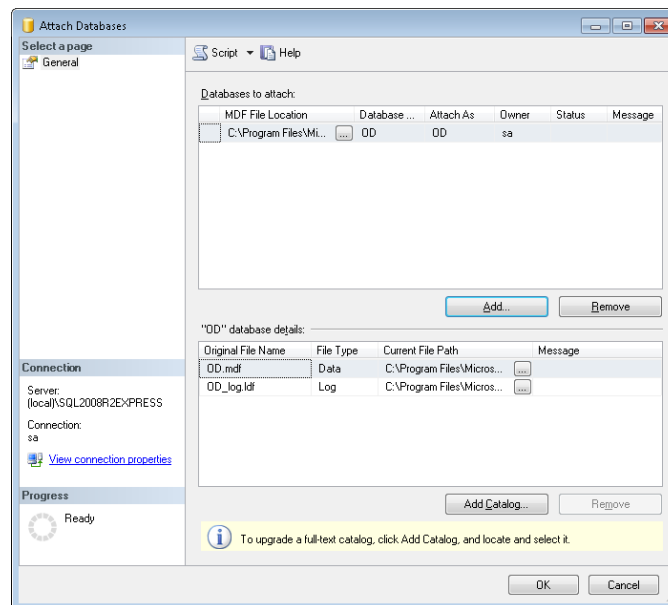
6. Right click on the "Databases" item under your server in the Object Explorer at the left of the window and choose "Attach" from the context menu. The following window will appear.



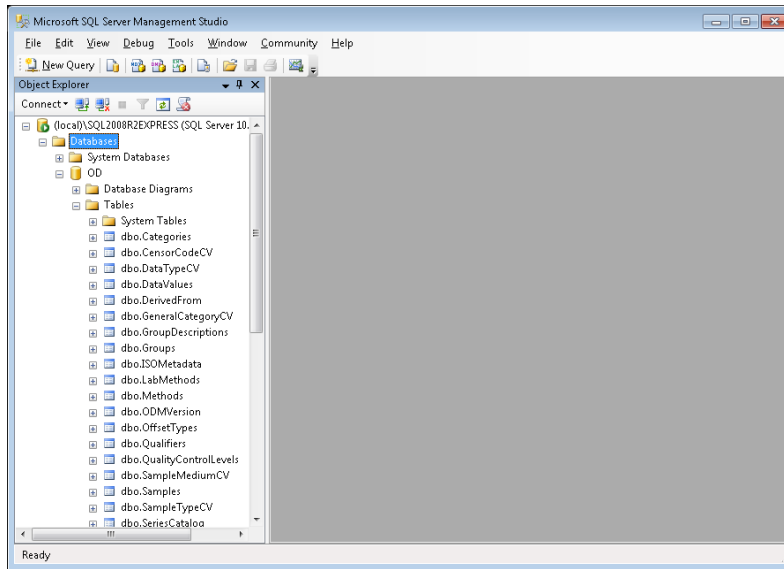
- Click on the “Add” button near the center of the form. In the window that opens, navigate to the location on your hard drive where you extracted the ODM test database. Select the .mdf file associated with the database that you want to attach (OD.mdf). See the following figure for an example.



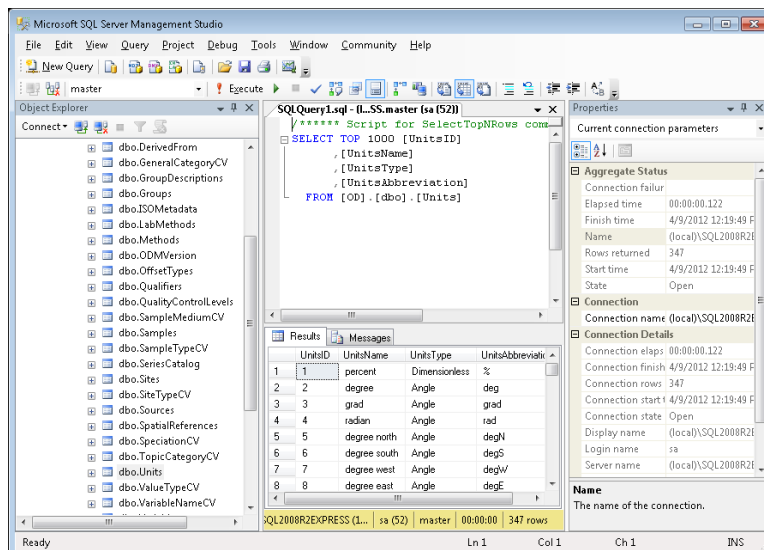
- Click the “OK” button. This will return you to the “Attach Databases” form and will populate that form with the information needed to attach the database that you have selected. You will notice that your selected database is listed in the “Databases to attach” section and that the details of your database files are shown at the bottom of the form. See the following figure.



9. Click the “OK” button. A window will pop up asking you whether you are certain that you have added all of the necessary full text catalogs. Click the “OK” button and then wait for a moment while the blank schema database is being attached.
  
10. Once the database has been attached, expand the “Databases” item under your server in the Object Explorer by clicking on the plus sign next to “Databases.” You should now see an item under “Databases” for the database that you just attached. If you do not see an item for the OD database, right click on the “Databases” item and choose “Refresh” from the context menu. You can further expand the OD database by clicking on the plus sign next to its name and then clicking on the plus sign next to “Tables” (see the following figure).



11. Although there is no data in the blank schema database, you can view the contents of the controlled vocabulary tables in the OD database by right clicking on them in the Object Explorer and choosing “Select top 1000 rows” from the context menu (see the following for the Units table).



12. You are now ready to begin adding data to your ODM SQL Server database.